



As a global enterprise, HSG sticks to providing professional and convenient service support to customers at home and board

- Professional Training**
Multiple technical training services and free operation training are provided for customers and dealers in a timely manner.
- Efficient Support**
Humanistic service model, online services and 7*24 hotline to offer solutions and assistance.
- Optimized Transport**
Multi-channel transport solutions and a professional transport solution team providing various transport cases to satisfy the demand of customers and save transportation fees.
- Sufficient Accessories**
Highly efficient accessory delivery service; multiple network inventories jointly respond to accessory demand, shortening customers' waiting times and accelerating production.
- Careful Services**
Domestic door-to-door service and free proofing, with over 100+ dealers providing efficient and convenient services.



Website

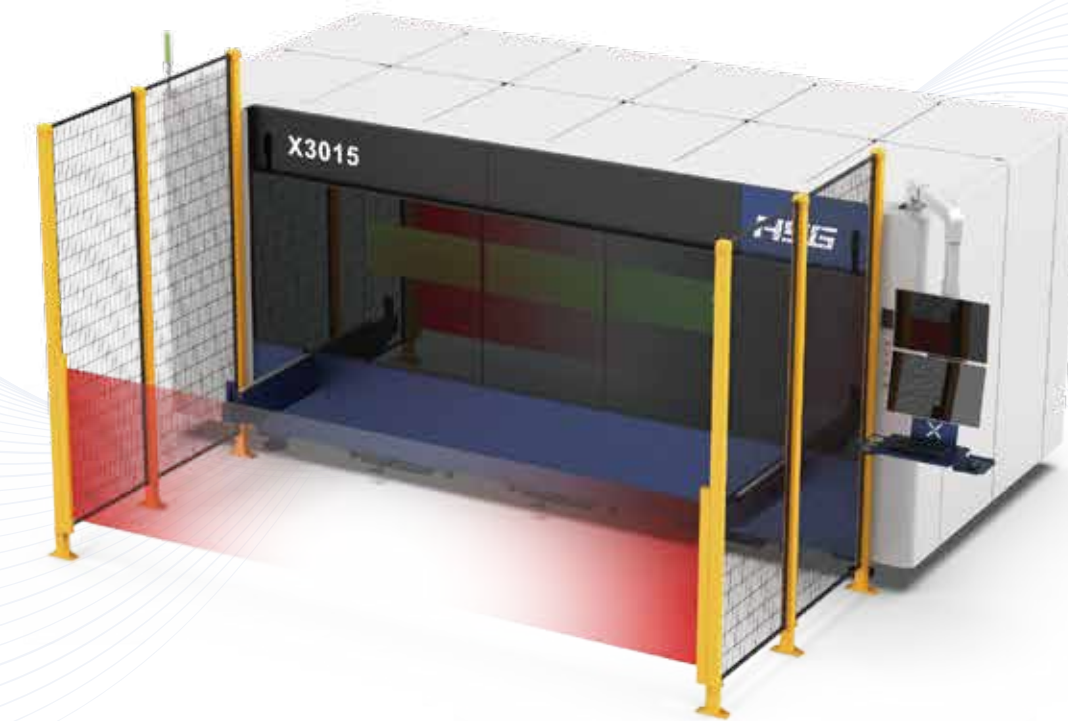


Facebook



Youtube

Headquarters Add.: No. 4, Anye Road, Shunde District, Foshan, Guangdong, China
Website: www.hsglaser.com
Email: info@hsglaser.com
Tel: +86 757-66833906



X

Compact Laser Cutting Machine

www.hsglaser.com

Company Culture

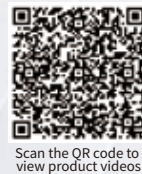
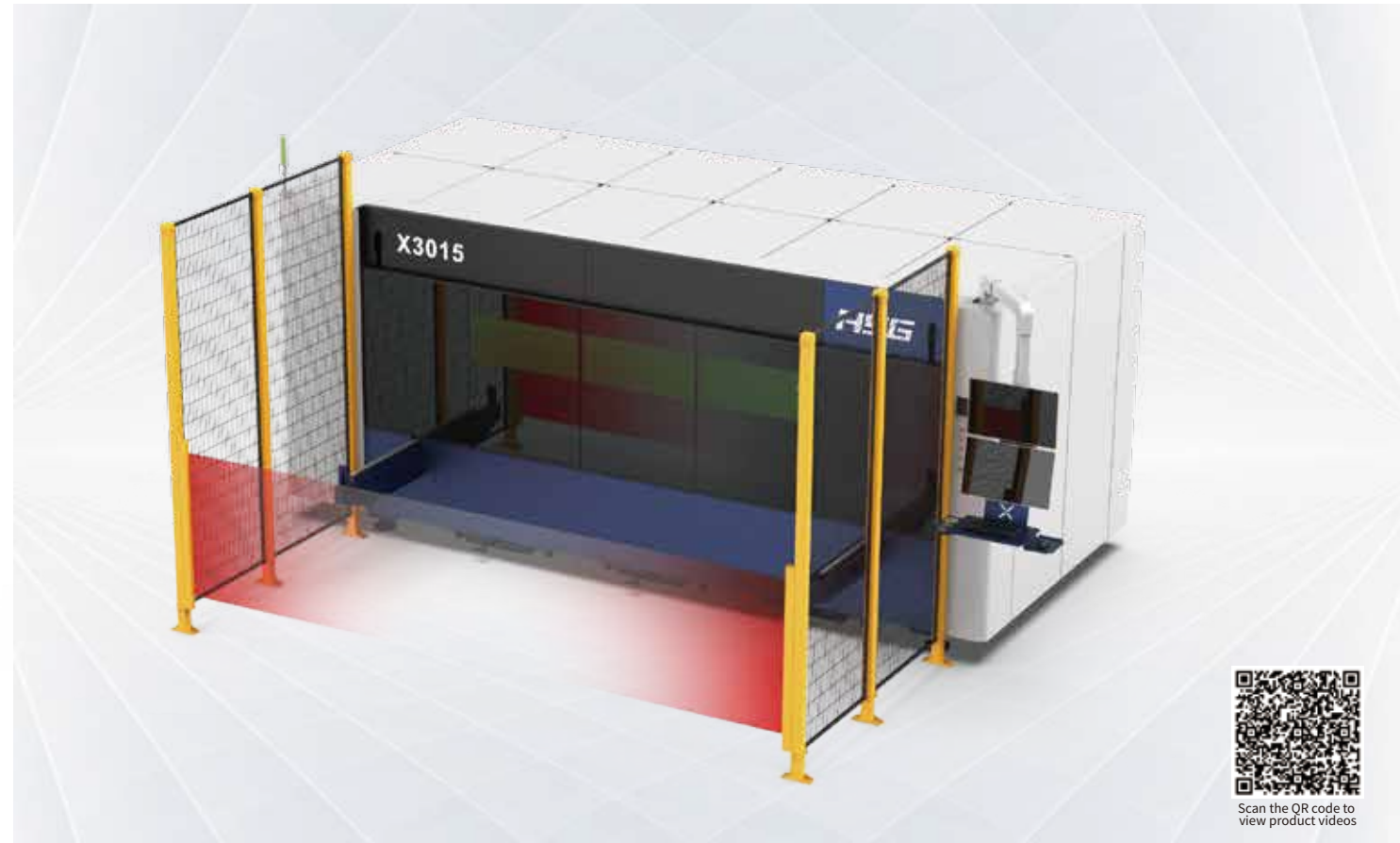
- SLOGAN**
Shape Metal, Shape Trust
- MISSION**
To support the high-speed growth of our customers
- VISION**
To be a world-leading provider of metal shaping equipments & comprehensive solutions

Company Profile

- 19** Global Branches
- 100+** Countries Covered
- 5** Manufacturing Bases
- 30+** Global Service Centers
- 8,000+** Annual Capacity
- 135,000m²** Occupied Area

X 1500-12000W

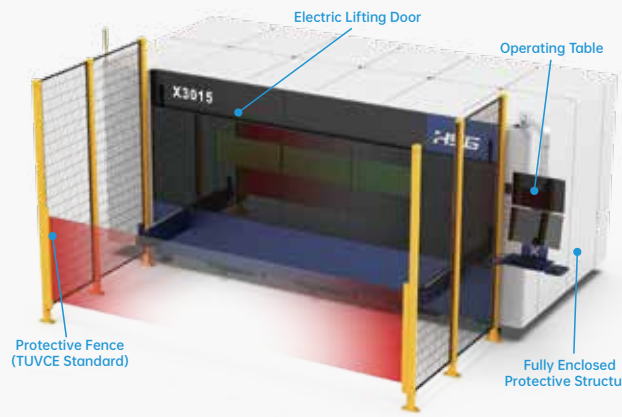
Compact Laser Cutting Machine



Scan the QR code to view product videos

Compact design, small footprint

- The design concept of the X series cutting machine is to minimize equipment size while ensuring processing capability, reducing equipment footprint, and saving space for customers.



Full protective structure, compliant with TUVCE certification standards

- The equipment adopts a fully enclosed structure with OD glass to prevent laser radiation; grilles, fences, and monitoring further prevent machine operation from causing harm to humans.



High processing efficiency Strong processing capability

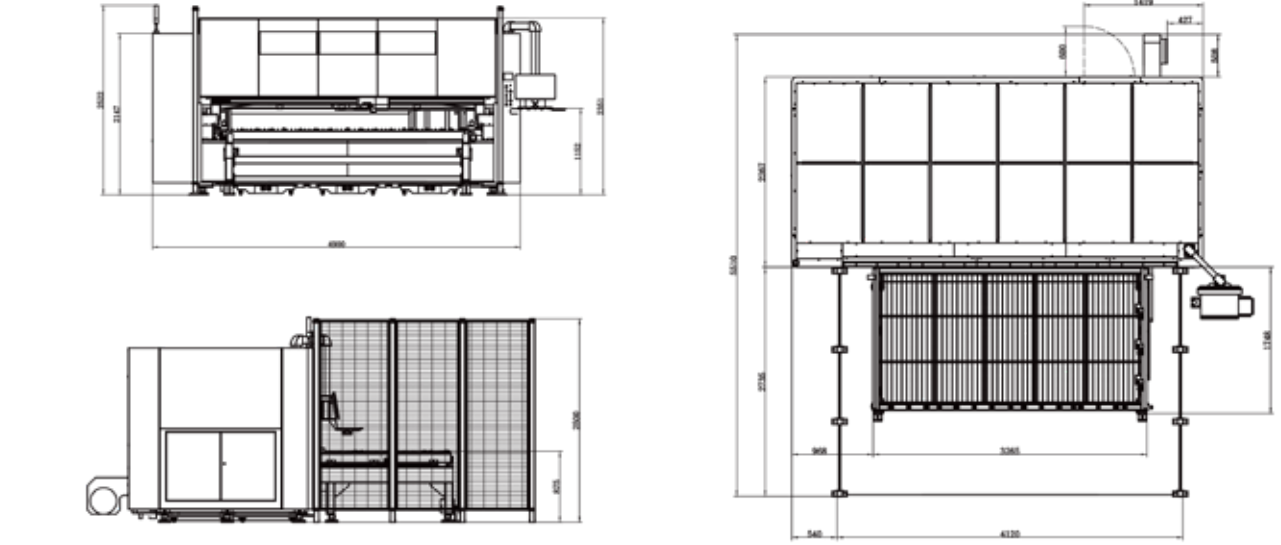
- The overall machine acceleration reaches 1.5G, greatly improving processing efficiency. The cutting worktable can bear a sheet weight of up to 1000kg, meeting the highest thickness of 30mm for whole sheet processing, resulting in higher processing capability.

Secondary processing positioning system

- The workbench is equipped with mechanical positioning blocks and cylinder clamping to ensure the stability of secondary processing positioning.



Machine Foundation



Cutting Samples



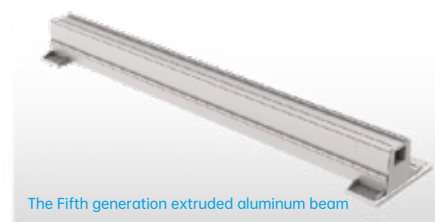
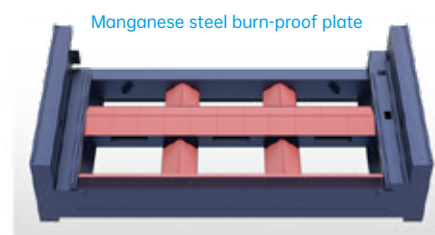
Technical Parameters

Technical Parameters	X3015
Power	1500W-12000W
Processing format (L*W)	1500W-6000W: 3048mm*1524mm 12000W: 3000mm*1500mm
X/Y-axis positioning accuracy	±0.03mm/m
X/Y-axis repositioning accuracy	±0.03mm
Max. Linkage Speed	120m/min
Max. Linkage Acceleration	1.5G
Max. Loading Weight of Platforms	1000kg(30mm Whole board)

* Machine appearance, technical parameters, function description, data comparison shown in this page are from HSG in-house laboratory. All testing results and experimental data shall be subject to real machine.

High Stability and Long-lasting Durability

- The bed is covered with manganese steel anti-burn plates, effectively blocking laser heat and avoiding thermal deformation. The fifth-generation extruded aluminum beam significantly improves torsional resistance, ensuring stable operation and durability of the equipment.

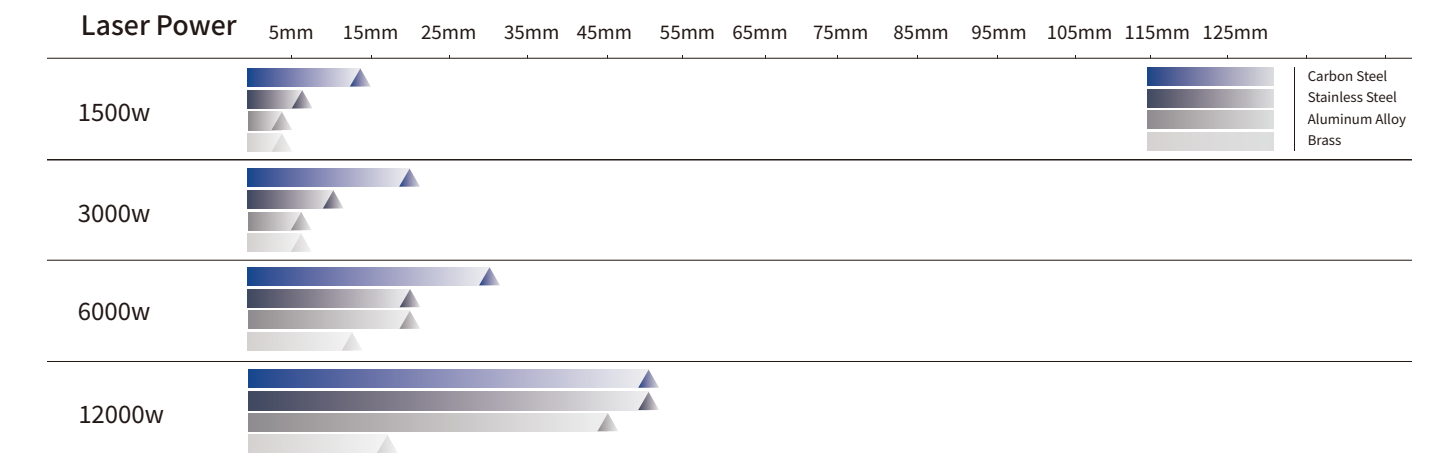


Richer system functionality

- Utilizing HSG's self-developed AlphaT2.0/Plus bus system, integrating a wealth of sheet metal processing techniques: lightning piercing, disk centering, slag removal after piercing, seamless micro-welding, perfect tool retraction, etc., making sheet metal cutting simpler.



Cutting Capacity



The actual machines shall prevail and above data & pictures are only for reference.